

How to Shut Off Your Gas

Turn off your gas meter ONLY if you smell gas or hear the hissing sound of gas escaping.

It is important to know exactly where your gas meter is located (See Diagram A), and how to shut it off in case of emergencies (See Diagram B).

As you face the meter, you will see a pipe running from the ground to the meter. There is a shut-off valve running parallel with the pipe usually located about 6 to 8 inches above the ground.

Take a 12" adjustable wrench (or larger) and turn the valve 1/4 turn in either direction, until the valve is crosswise to the pipe. (See Diagram B)

Keep a 12" adjustable wrench (or larger) with your emergency supplies, or next to your valve.

Diagram A

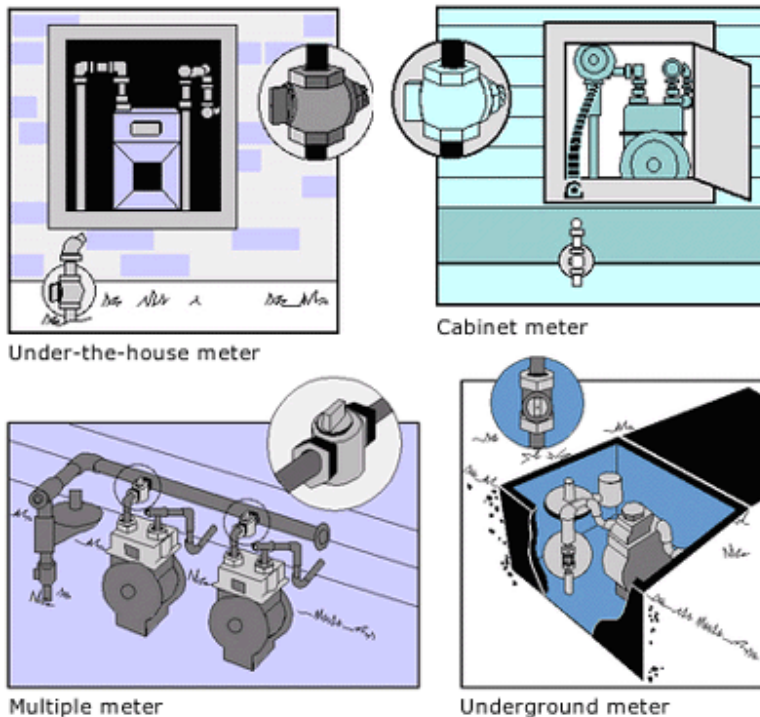
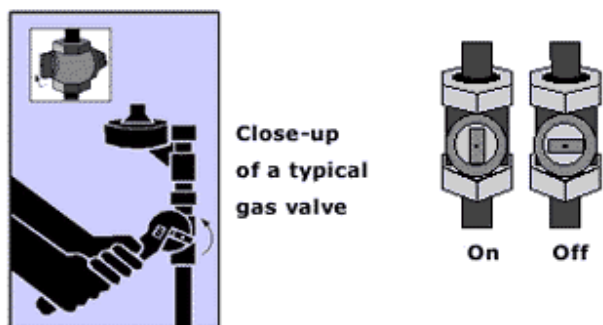


Diagram B



For safety, a shut-off valve should be installed at every gas appliance. If a leak occurs at a specific appliance, the valve will permit you to turn off the gas at the appliance rather than shutting off all gas service at the meter. Some valves require a wrench to turn them. See Diagram C.

Diagram C



After shutting off your gas, if you aren't certain how to safely restore gas service to your home, or how to inspect your appliances, call The Gas Company or a qualified service provider such as a licensed plumber.